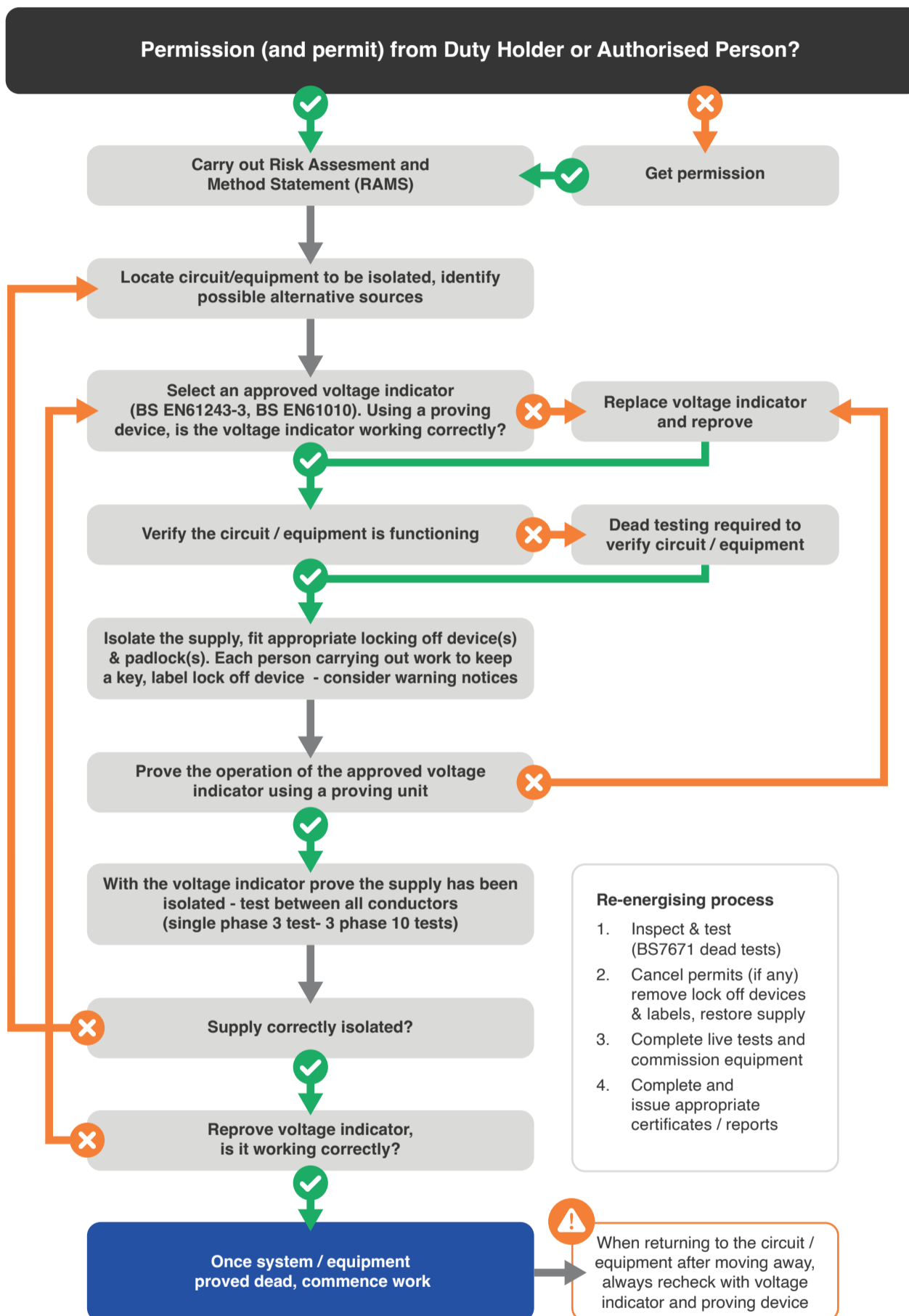


# Safe isolation procedure

Working on or near low voltage electrical systems & equipment



Resources



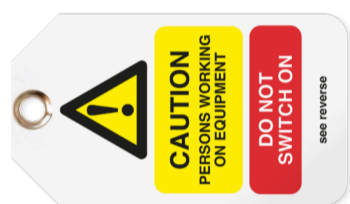
Electrical Safety First  
Safe isolation best practice guide 2



HSE - Electrical safety at work  
Safe working practices



Martindale's ALIVE  
5 fail proof steps to safe isolation



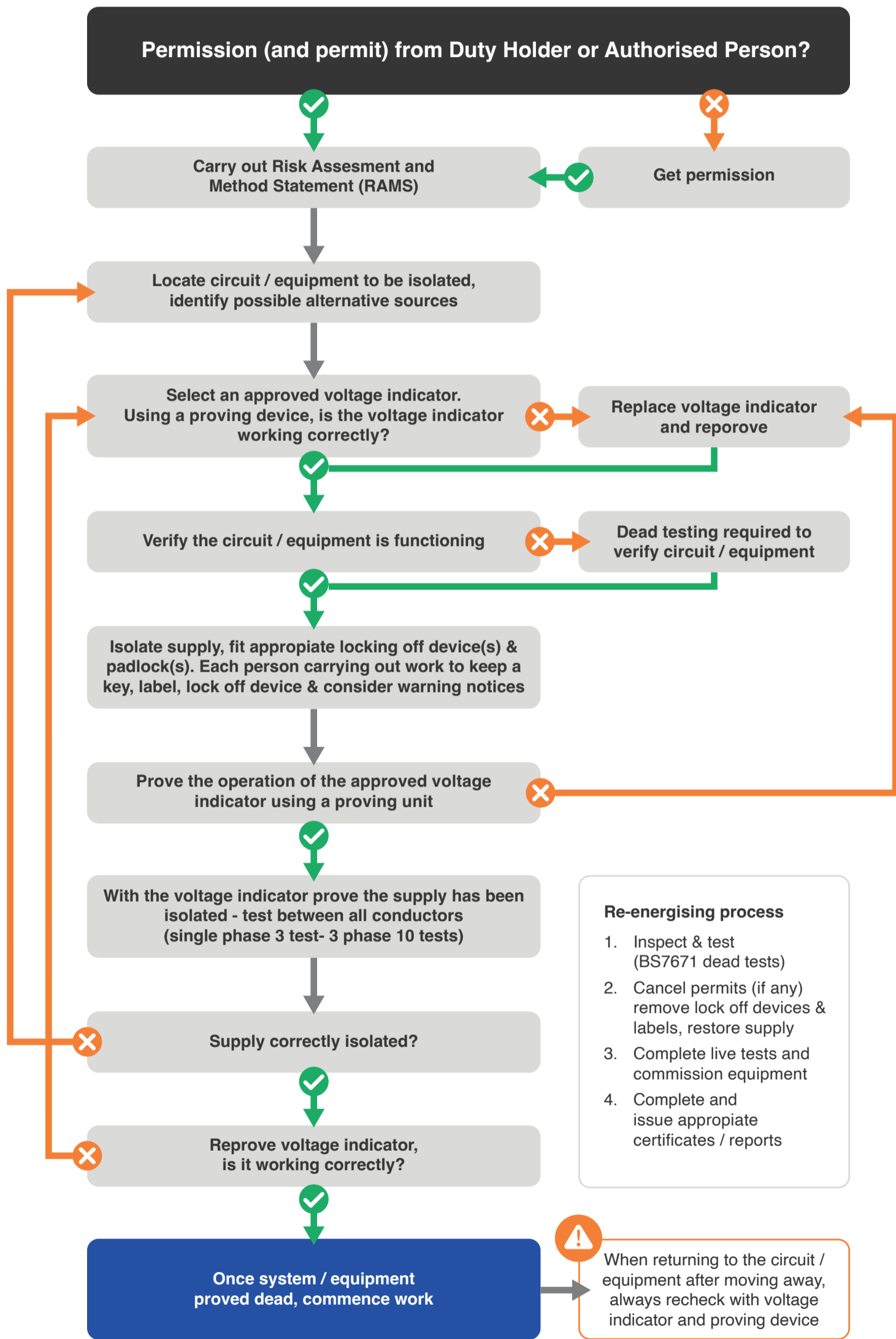
+44 (0)1923 44 17 17  
sales@martindale-electric.co.uk  
www.martindale-electric.co.uk  
Ver. F1.1

Due to our policy of continuous development, Martindale Electric reserves the right to alter equipment specification and description outlined in this document without prior notice. No part of this document shall be deemed to be part of any contract for the equipment unless specifically referred to as an inclusion within such contract. © 2025 Martindale Electric Co. Ltd. Registered in England No. 3387451.

# Safe isolation procedure

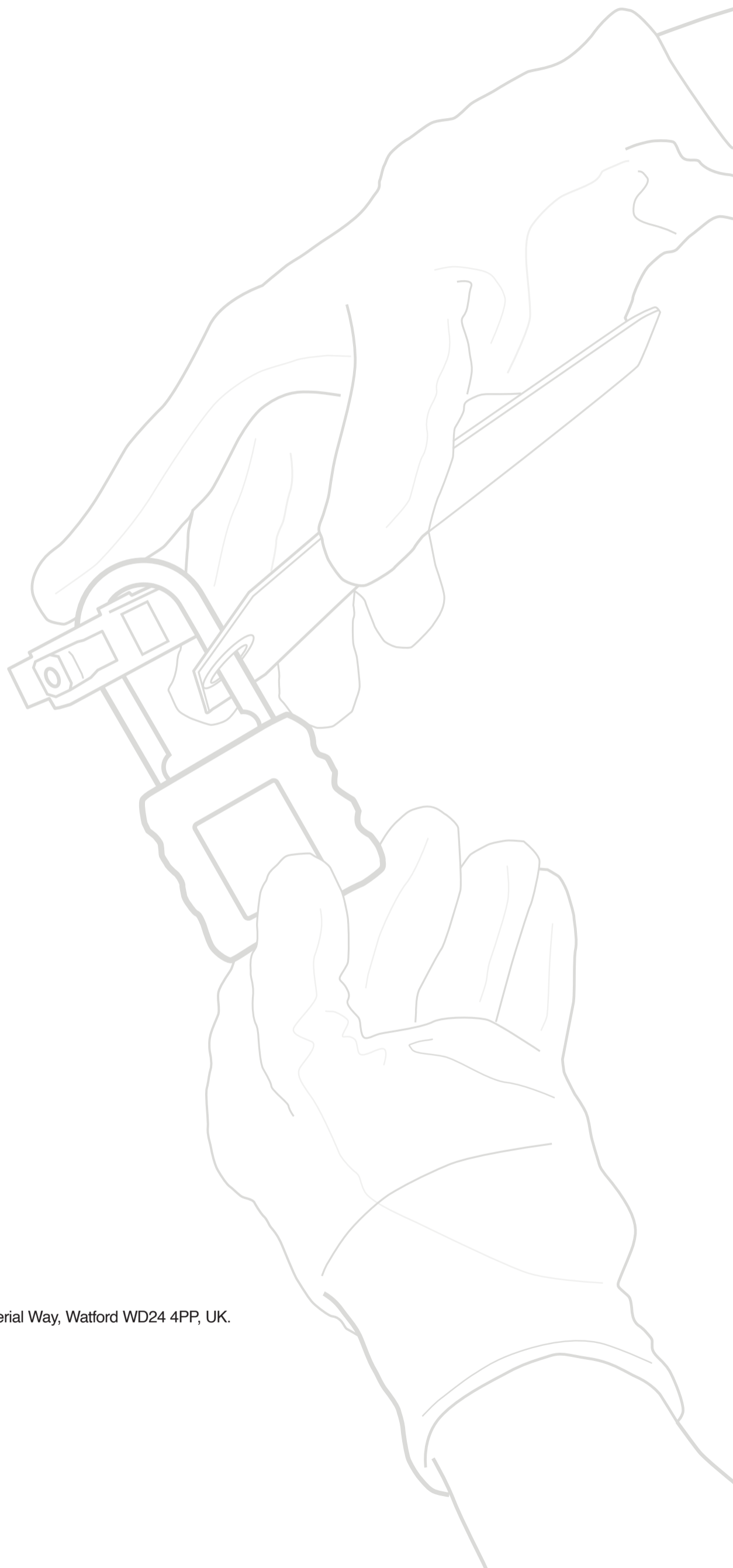
Working on or near low voltage electrical systems & equipment

Keeping You Safe



**Re-energising process**

1. Inspect & test (BS7671 dead tests)
2. Cancel permits (if any) remove lock off devices & labels, restore supply
3. Complete live tests and commission equipment
4. Complete and issue appropriate certificates / reports



Martindale Electric Co. Ltd. Metrohm House, 12 Imperial Park, Imperial Way, Watford WD24 4PP, UK.  
T: +44 (0)1923 441717  
[www.martindale-electric.co.uk](http://www.martindale-electric.co.uk) [sales@martindale-electric.co.uk](mailto:sales@martindale-electric.co.uk)

**Ver. F1.0**

Due to our policy of continuous development, Martindale Electric reserves the right to alter equipment specification and description outlined in this document without prior notice. No part of this document shall be deemed to be part of any contract for the equipment unless specifically referred to as an inclusion within such contract. © 2025 Martindale Electric Co. Ltd. Registered in England No. 3387451.

# Safe isolation procedure

Working on or near low voltage electrical systems & equipment



## Approved kit

Before starting, make sure your equipment meets all legal safety standards (BS EN61243-3).



## Lock out, tag out

Identify the point of isolation - lock it off and place warning tags onto the equipment (LOTO).



## Initial Prove

Test your Voltage Indicator (VI) against the proving unit to make sure it is working properly.



## Voltage test

Use your VI to confirm dangerous voltage levels are not in the circuit you are about to work on.



## Ensure

Prove and re-test the VI against the proving unit to ensure it is still functioning before working on the circuit.



+44 (0)1923 44 17 17

sales@martindale-electric.co.uk

www.martindale-electric.co.uk

Due to our policy of continuous development, Martindale Electric reserves the right to alter equipment specification and description outlined in this document without prior notice. No part of this document shall be deemed to be part of any contract for the equipment unless specifically referred to as an inclusion within such contract. © 2025 Martindale Electric Co. Ltd. Registered in England No. 3387451. Ver. F1.0

